

APPLICATION

Designed to perform heating or cooling duties on larger Terminal Units. Suitable for branch connections and plantrooms. Vertical and horizontal mounting. Includes the PICV and all components required to dynamically flush, purge, vent, automatically balance the system and control the temperature at the Terminal Unit with 100% authority. In order for the PICV to function as intended, water must always be suitably treated, clean, free of debris and maintained as per the relevant water quality standards (VDI2035, BSRIA BG50 or equivalent).

SPECIFICATION

Static Pressure:	25 Bar
Working Temperature:	-10°C to 110°C
Size Range:	DN32 to DN50
Connections:	<ul style="list-style-type: none"> ISO fixed female
Features:	<ul style="list-style-type: none"> Easy selection based on flow rate Wide choice of extras [air vents, pressure/temperature gauges] and actuators (electric or thermic, raise lower, modulating, on/off, feedback, failsafe) Blank cap option for dynamic back flushing Accurate flow measurement verification at the terminal unit Supplied set, individually labelled to schedule & terminal unit, ready to fit 100% tested
Components:	<ul style="list-style-type: none"> FlowCon 5-position flushing bypass, 105mm centres, with extended handles and 2 3-Way flushing valves FlowCon strainer Effebi full bore ball valve VIR venturi metering station FlowCon Green.2 or Green.3 PICV Green.2: FlowCon FN or FNP Actuator, can be set to equal % or linear control, with failsafe, electrical override and position indicator; Green.3: FlowCon FH Actuator. IP54 rated, including upside-down
Material:	<ul style="list-style-type: none"> DZR brass, elastomers EPDM, nickel-plated brass

PRODUCT CODES AND SELECTIONS

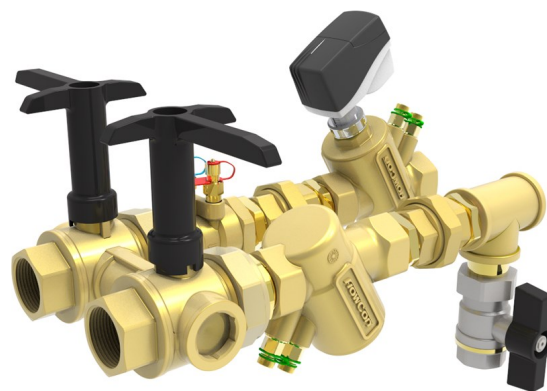
P5.11.x.114.114.T.2.x

AAV = Automatic Air Vent
BV = Ball Valve
PT = PT Plug
TG = Temperature Gauge
PG = Pressure Gauge
2 = Green.2 [0.240—1.29 l/s, 16-800 kPaD]
3 = Green.3 [0.528—3.79 l/s, 16-600 kPaD]
T = Threaded
114 = 1 1/4", 112 = 1 1/2", 2 = 2"
0 = no additional flow measurement
R = Metering Station in the return
6 = Metering Station Kvs 9.72
7 = Metering Station Kvs 20.25
8 = Metering Station Kvs 30.23
9 = Metering Station Kvs 55.07
0 = no addition to the flow branch
1 = Plain Strainer
2 = PT Plug
4 = Hose Union Drain Valve
7 = Plain Strainer & Hose Union Drain Valve
9 = Strainer with 1 Plug & Gasket and 1 Combined PT Plug & Drain
11 = Strainer with 2 PT Plugs
12 = Strainer with 1 PT Plug and Combined PT Plug & Drain
2 Union Bypass PICV FloSet, 105 mm centres

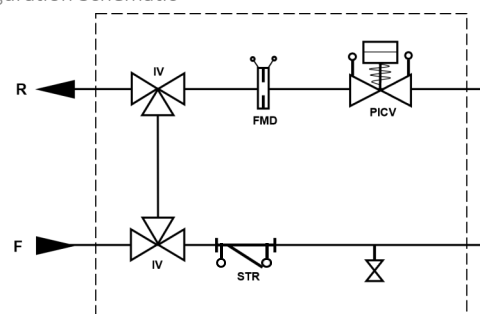
FloSet® 105

P5.11.7R.114.114.T.2.BV

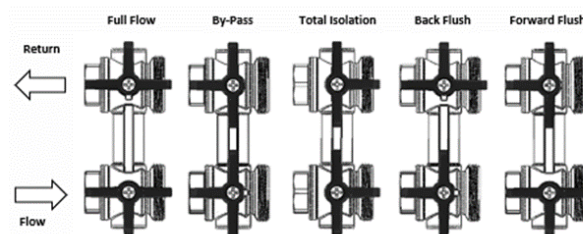
FloSet 105 comprising large 2 Union By-Pass; Strainer fitted with 2 PT Plugs and Drain Valve in the Flow Branch; Green.2 PICV and 32 Metering Station to the Return Branch. 1 1/4" Female Threaded System and Outlet Connections. FNP Actuator supplied loose.



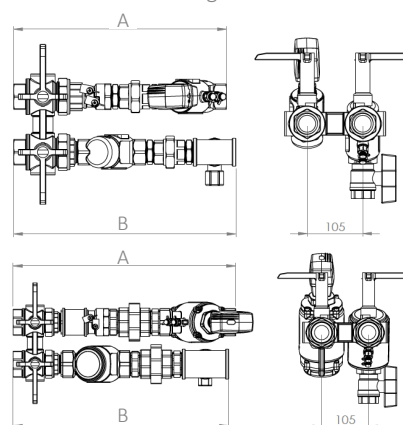
Configuration Schematic



Bypass handle positions supporting 5 functions



Dimensional Drawings



Product Code	A	B
P5.11.7R.114.114.T.2.BV	400	420
P5.11.8R.112.112.T.3.BV	470	485
P5.11.8R.2.2.T.3.BV	560	540