

APPLICATION

Flanged PICV Plant Room Valve Sets are designed to perform heating and cooling duties in HVAC plant room installations. Valve sets are supplied pre-assembled, tested, set and ready to install.

Horizontally or vertically configured and fitted with a bespoke, fabricated bypass, the valve set includes the PICV and components required to dynamically flush the system backward, forward or externally, purge, vent, automatically balance and to control the temperature with 100% authority.

SPECIFICATION

Static Pressure: 16 Bar
Working Temperature: -0°C to 100°C
Size Range: DN50 to DN250
Max. Operational ΔP: 800 kPaD
Flanged Connections: BS EN1092

- Components:
- FlowCon SM PICV, flow rate range 1.48 - 76.8 l/s [PN40, Ductile Iron]
 - 3 FlowCon IVC gear-operated Butterfly Valves [PN16, Ductile Iron]
 - FlowCon IVC Strainer [PN16, Cast Iron]
 - FlowCon IVC Orifice Plate [PN16, Stainless Steel]
 - Effebi 2411 Series Ball Valve [PN16, DZR]
- Optional:
- FlowCon FIT Energy Valve temperature and pressure sensor kit & intelligent interface extension
 - Actuator Failsafe and BACnet options
 - Gauges
 - Incorporation of a free-issued control valve of choice
- Features:
- 100% pressure tested
 - Accurate flow measurement verification
 - Actuator can be set to equal % or linear control with multiple control modes

PRODUCT CODES AND SELECTIONS

P12.1.11R.80.F.3-1.PG

PG = Pressure Gauge

3-0 = SM PICV 30-800 kPaD, 1.48—4.16 l/s
3-1 = SM PICV 30-800 kPaD, 2.57—7.15 l/s
3-2 = SM PICV 35-800 kPaD, 3.55—9.89 l/s
4-1 = SM PICV 30-800 kPaD, 3.49—9.38 l/s
4-2 = SM PICV 35-800 kPaD, 4.73—14.2 l/s
4-3 = SM PICV 50-800 kPaD, 3.68—20.2 l/s
5-1 = SM PICV 30-800 kPaD, 6.48—23.3 l/s
5-2 = SM PICV 35-800 kPaD, 7.10—29.5 l/s
6-2 = SM PICV 30-800 kPaD, 9.21—76.8 l/s

F = Flanged

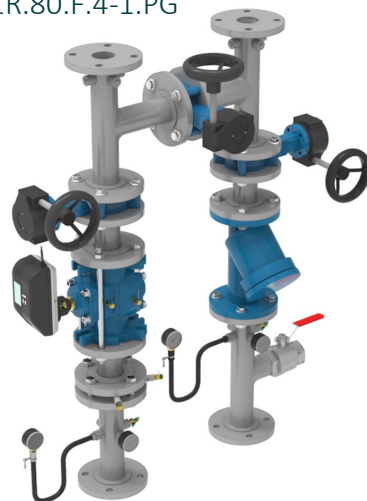
50 = diameter PICV
65 = diameter PICV
80 = diameter PICV
100 = diameter PICV
150 = diameter PICV
200 = diameter PICV
250 = diameter PICV

0 = no flow measurement
10[R] = 65mm Metering Station Kvs 88.6
11[R] = 80mm Metering Station Kvs 150.6
12[R] = 100mm Metering Station Kvs 281.1
13[R] = 125mm Metering Station Kvs 328.8
14[R] = 150mm Metering Station Kvs 477.5
15[R] = 200mm Metering Station Kvs 826
16[R] = 250mm Metering Station Kvs 1218

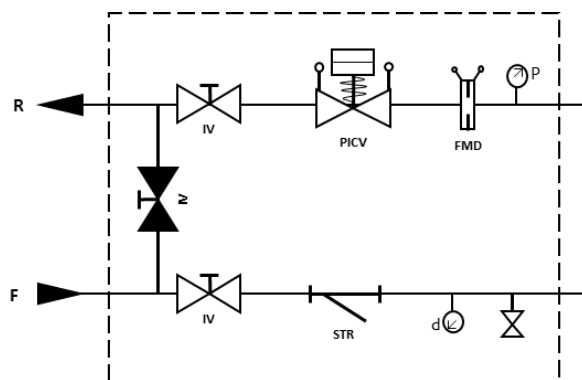
0 = no addition to the flow branch
1 = Strainer

P10 = 50mm fabricated bypass
P11 = 65mm fabricated bypass
P12 = 80mm fabricated bypass
P13 = 100mm fabricated bypass
P14 = 125mm fabricated bypass
P15 = 150mm fabricated bypass
P16 = 200mm fabricated bypass
P17 = 250mm fabricated bypass

P12.1.11R.80.F.4-1.PG



SCHEMATIC P12.1.11R.80.F.3-1.PG



EXAMPLE SPECIFICATION TEXT 80MM
VALVE SET P12.1.11R.80.F.3-1

Flanged Prefabricated PN16 Valve Set comprising 80mm Fabricated By-Pass. Strainer and Drain Valve to the Flow Branch. 80mm Metering Station and SM.3.1 PICV to the Return Branch. Gauges optional.

DIMENSIONS 80MM VALVE SET
P12.1.11R.80.F.3-1

Dimensional drawings for other sizes are available on request.

