

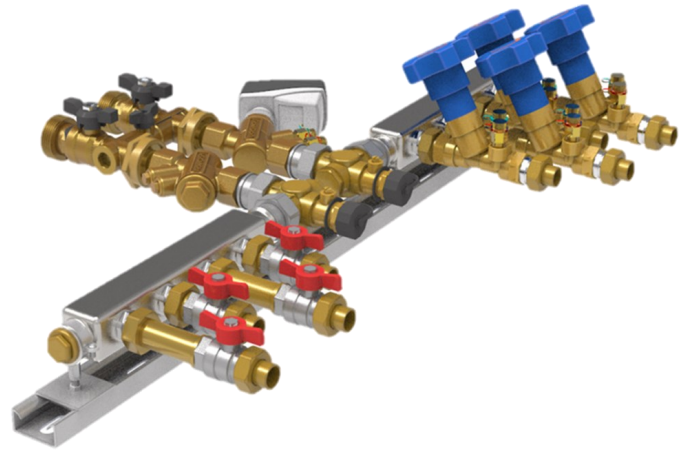
APPLICATION

Designed to control the temperature of specific zones in an easy and cost effective way through a single PICV and a set of balancing valves for each terminal unit. Supplied pre-assembled on the bracket, tested, set and ready to fit.

Typically configured horizontally to fit into limited ceiling space. A wide range of manifold sizes, connections and extensions is available, whilst the compact size of the valve set is maintained.

Comprises all components required to dynamically flush the system, forward or back flush the terminal units, automatically balance the flow rate to the zone and terminal units and to control the temperature to the zone with 100% authority.

In order for the PICV to function as intended, water must always be suitably treated, clean, free of debris and maintained as per the relevant water quality standards (VDI2035, BSRIA BG50 or equivalent).

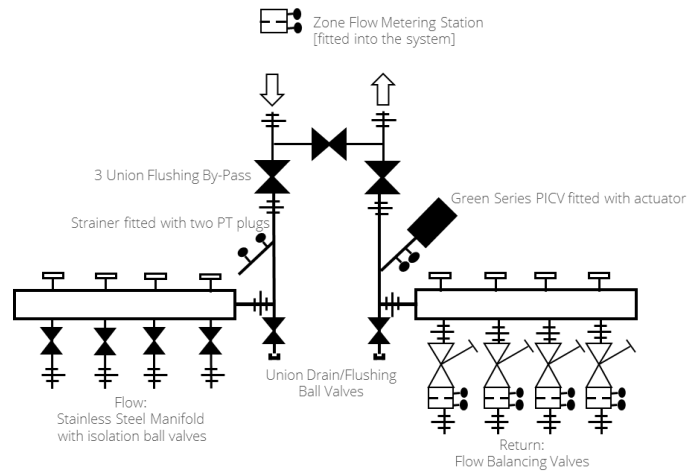


SPECIFICATION

Static Pressure:	25 Bar
Working Temperature:	-10°C to 110°C
Size Range:	DN15 to DN25
Max. Operational ΔP:	800 kPaD
Connections:	System side: fixed female ISO, terminal unit side: union end connections, ISO or solder

Components & Material:	<ul style="list-style-type: none"> FlowCon Components: DZR, PN25, -20°C - 120°C: <ul style="list-style-type: none"> * 3 union bypass * Green PICV [flow rate 0.005—1.29 l/s] * Strainer FlowCon FN actuator equal % or linear control Manifold: Stainless Steel Commissioning Valve: DZR, PN25, -10°C - 110°C Ball Valve: Nickel-plated Brass, PN40, -15°C - 110°C

SCHEMATIC



EXAMPLE SPECIFICATION TEXT 1/2" DISTRIBUTION MANIFOLD P.15.M4.1.13.1.0

Green.0 PICV 4-Port Manifold with 15mm inlet, fitted with 4 VIR 15XLF Commissioning Valves to the Ports. Strainer for flushing. Actuator & system-fitted XLF Metering Station included in the price but supplied separately.

PRODUCT CODES AND SELECTIONS

P.15.M4.1.13.1.0

EQ0 = GreEQ.0 PICV	[0.005—0.126 l/s, 16-600 kPaD]
0 = Green.0 PICV	[0.0103—0.160 l/s, 16-600 kPaD]
1 = Green.1 PICV	[0.0178—0.308 l/s, 30-800 kPaD]
EQ1 = GreEQ.1 PICV	[0.0764—0.224 l/s, 30-800 kPaD]
1HF = Green.1HF PICV	[0.172—0.736 l/s, 35-800 kPaD]
0 = no zone flow measurement	
1 = 65mm Metering Station Kvs 0.263	
2 = 80mm Metering Station Kvs 0.550	
3 = 100mm Metering Station Kvs 1.15	
4 = 125mm Metering Station Kvs 2.80	
5 = 150mm Metering Station Kvs 5.40	
0 = no strainer to the flow branch	
13 = strainer with 2 plugs & gaskets	
1 = 15 XLF Commissioning Valve [Kvs 0.263]	
2 = 15 ULF Commissioning Valve [Kvs 0.55]	
3 = 15 LF Commissioning Valve [Kvs 1.15]	
4 = 15 Commissioning Valve [Kvs 2.80]	
5 = 20 Commissioning Valve [Kvs 5.33]	
M2 = 2-Port Manifold	
M3 = 3-Port Manifold	
M4 = 4-Port Manifold	
M5 = 5-Port Manifold	
M6 = 6-Port Manifold	
15 = 15mm inlet size	
20 = 20mm inlet size	
25 = 25mm inlet size	
P = Pressure Independent Zone Control	

DIMENSIONS 1/2" VALVE SET P.15.M4.1.13.1.0

Dimensional drawings for other sizes and configurations are available on request.

