

# FIVC Y-Strainer

Bronze – PN 20 – Screwed Cap – ISO 228



## Technical data

### Main features and materials

- Body: Bronze CC491K
- Cap: Bronze CC491K
- Screen: Stainless Steel
- Gasket: PTFE
- Testing: BS 6755
- USP: Wras approved  
Compact settlement  
Environment-friendly  
WRAS approval - Model no. 3657

### Field of applications

- Temperature range: -10 to 85 °C
- Non-WRAS: -10 to 100 °C
- Max. working pressure: 20 bar  
7 bar at 170 °C

FYS series

- Potable water
- HVAC
- LTHW
- CHW
- Oil distribution
- Steam applications

## Description

FIVC Y-Strainer is designed to collect and prevent solid impurities from entering the pipeline that can cause malfunction and damage to the most sensitive plant components such as pumps, control valves, flow, and heat meters. The strainer holds solid particles, debris, which dimensions exceeds screen mesh.

The collected debris can thereby be disposed and the filter can be cleaned without removing the strainer from the line. The valve can be used for Water, Steam, and Oil respectively.

## Alternative Product Versions

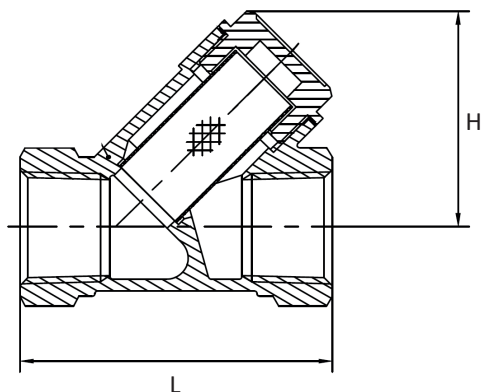
### Other Standards

ANSI • ASME B1.20.1 • NPT  
ISO 7/1 Rc/Rp threads

### Declaration

The product has been inspected and tested in accordance with the Sound Engineering Practice SEP. Acc. to the European PED Directive N° 2014/68/EU, dated 15/05/2014, the product is exempted from CE marking (Cf. Art. 4.3). This valve is WRAS-approved.

## Dimensions



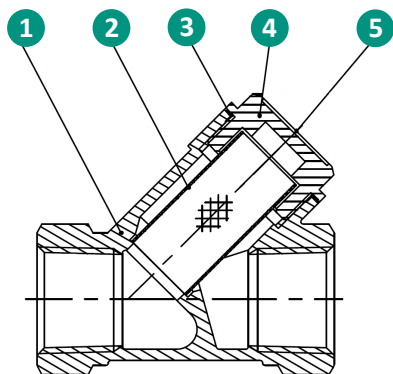
Product code	Size	L	H	Kg
FYS015O20540121	15	58	40	0.185
FYS020O20540121	20	70	51	0.298
FYS025O20540121	25	88	57.6	0.426
FYS032O20260121	32	96	58.5	0.72
FYS040O20260121	40	107	74	0.98
FYS050O20260121	50	126	95	1.5

Dimensions are in millimeters

# FIVC Y-Strainer

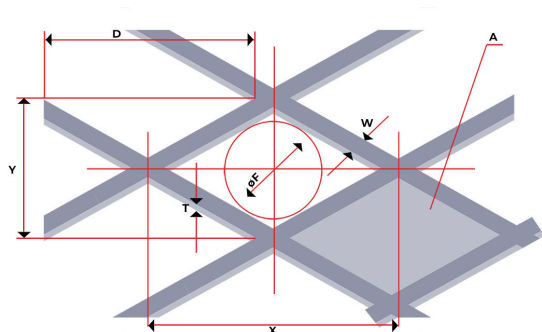
Bronze – PN 20 – Screwed Cap – ISO 228

## Product Specification



N°	Name	Material
1	Body	Bronze CC491K BS EN 1982
2	Screen	Stainless Steel SS 304 ASTM A2276-96
3	Gasket	PTFE
4	Cap	Bronze CC491K BS EN 1982
5	ID plate	Aluminium

## Screen Information



ST*	Mesh*	øF*	T*	A*	Opening Area
	Per cm2	mm	mm	mm²	%
Mesh	54 (DN 15-25)	0.6 (DN 15-25)	0.3	1.13	61
	26 (DN 32-50)	1.2 (DN 32-50)	0.4	2.77	72

\*ST: Screen type • Mesh: Number of holes • øF: Inscribed hole diameter  
• T: Wire thickness • W: Wire width • A: Area of hole